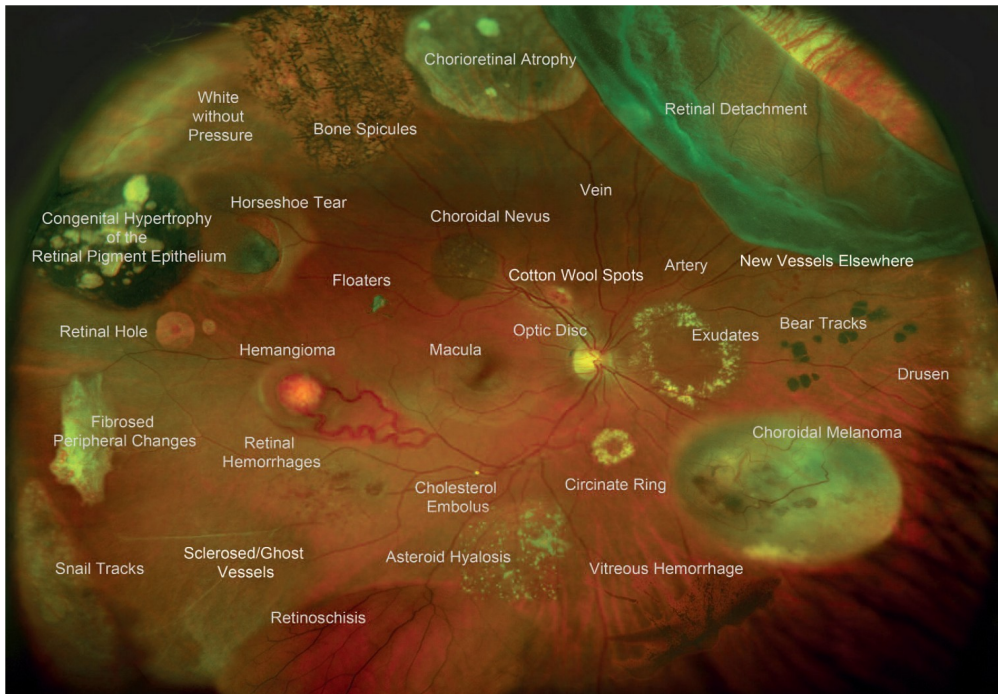


Optomap Consent Form



As part of a comprehensive eye examination, Primary Eyecare Associates recommends that ALL patients have the internal health of their eyes thoroughly evaluated every year. This can be performed as either a dilated retinal examination or the Optomap retinal imaging. A thorough retinal exam can detect eye diseases including glaucoma, macular degeneration, retinal detachment, and diabetic retinopathy, as well as risk for conditions such as hypertension, diabetes, and stroke. These health conditions are difficult to detect without the Optomap or dilation of the pupils with eye drops due to the limited view of the internal structures of the eye. The Optomap provides an annual, permanent record for your medical file. The ability for our doctors to view last year's image and this year's image side by side for comparison is an invaluable tool in providing comprehensive eye care. Many patients who choose to have the Optomap will not require pupil dilation, however your doctor will determine if dilation is necessary based on your specific conditions or concerns.

Routine Optomap photos are an additional \$40 fee, not covered by vision insurance plans. If there is a medical condition being followed by your doctor, photos of a higher resolution can be submitted to your medical insurance - copays and deductibles may apply based on your plan. We are unable to determine this cost prior to submitting the claim, and you will be billed for any fees due.

I have read and understand the above, and agree to the Optomap Retinal Exam and fees that may apply.

Patient Signature:

DISCLAIMER: By typing your name above, you are signing this form electronically. You agree that your electronic signature is the legal equivalent of your manual signature on this application.

